

LV JUICE

NEW AIRSTOP WEATHER SEALS



ISOCELL

AIRSTOP Cable Sleeves guarantee that your construction is wind-tight and airtight. Designed to enable vapour barriers and other materials to fulfill their purpose as an airtight layer, these one piece adhesive collars are used to seal joints at cable entry points and openings for conduits in buildings.

Sizes available for 8mm to 165mm diameter.

ADVANTAGES

- Extremely flexible
- Resistant to ageing
- Integrated sealing plaster for airtight adhesion
- Rubber heat-resistant up to 160°C (short term)



This Month

INSTALLATION TESTER
PROMO KIT

PAGE 6

NEW PRODUCT!
FIRETHERM INTUMASTIC
HP

PAGE 7

WHY CHOOSE SPARTAN
LED?

PAGE 8

FREE BAG OF
JAFFAS

WHILE STOCKS LAST

When you spend
over \$300 (excl
GST) on one
invoice this month





A TRULY BIMETALLIC FRICTION WELDED CONNECTOR



VCXI lugs consist of an aluminium barrel linked to a copper palm by friction welding technology. The aluminium barrel is provided with a shear head bolt controlling the tightening torque.

APPLICATIONS

- Used for connection of aluminium or copper industrial conductor
- For indoor application only
- LV connection on busbar inside electrical panel and on compact type circuit breaker (new generation)

FEATURES

- Accepts aluminium and copper cables
- Copper palm compatible with the palms of the apparatus to be connected
- Only 5 lugs will connect from 25 to 500mm²
- Can be fitted into the new generation of compact type circuit breakers
- Inner surface of aluminium barrel is grooved at the manufacturing stage and greased to ensure a good electrical contact with wires to be joined
- Tightening torque controlled by shear head system
- No specific tool needed
- Only one bolt to tighten

Cat No.	Cross Section Range (mm ²)		Stud Size LB
	Aluminium	Copper	
VCXI-11-M6	25-70	25-50	M6
VCXI-14-M10	50-120	50-95	M10
VCXI-18-M10	95-185	95-120	M10
VCXI-29-M16	150-300	150-185	M12
VCXI-22-M12	240-500	240	M16





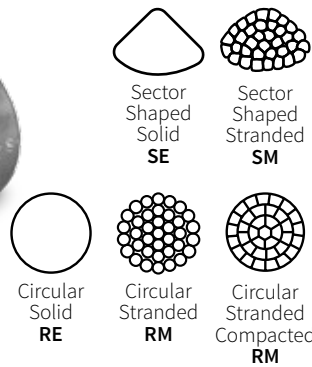
LV MECHANICAL CONNECTORS FOR ROUND & SECTOR CABLE - BLOCKED

LV MECHANICAL CONNECTORS FOR ROUND & SECTOR CABLE - BLOCKED

BSLB LV Mechanical Connectors are perfect for a range of conductors such as round and sector solid/stranded 3 core and 4 core. These connectors are also range taking, reducing the inventory list required to cover all possible sizes. Made from High Strength, Tin Plated Aluminium Alloy, these connectors are made to the highest international standards & offer excellent reliable connections for LV installations up to 1kV.

FEATURES & BENEFITS

- Fully compliant to the new specification DIN 47640
- Bodies and shear off bolts made of high strength Aluminium alloy
- Cross-grooved conductor channels for improved long term contact performance
- Bodies, with rounded edges, completely electro-tinned
- Bolts with outer hexagonal head, waxed for better installation
- Unique design with round bores & milled notches to allow installation of sector-shaped conductors without rounding
- Blocked for barrier against moisture transfer
- Successful qualification according to IEC-61238-1 Class A
- Bimetal, Al-Al, & Cu-Cu connections



SHEARBOLT HOLDING TOOLS



1000V CONNECTOR HOLDING TOOL

1000V rated, dual insulated mechanical connector holding tool. Used for easier installation of mechanical connectors, avoids cable being over bent and offers adequate hold on connector to ensure correct torque can be reached to install connector correctly.

- Adjustable to fit a range of connectors
- Application diameter range: 15 - 40mm

Product #223

\$215.00
+ GST

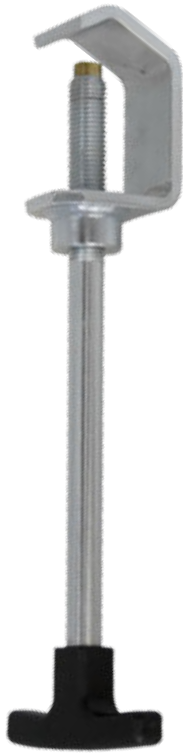
MECHANICAL CONNECTOR HOLDING TOOL

This tool helps avoid the cable cores being over bent during installation of mechanical connectors, while at the same time offering a good hold to ensure the connector is installed correctly and the required torque can be reached.

- Application diameter range: 15-60mm OD
- Length of handle: 205 mm

Product #IT-1000-019

\$189.00
+ GST



ISOTOOLS... und sicher!

All Specials and Products featured in TRANSNET JUICE are available from all good electrical wholesalers.





TRANSNET MAINS ENTRY BOXES: NOW AVAILABLE IN 1, 2 & 3 PHASE

TRANSNET MAINS ENTRY BOX 1, 2 & 3 PHASE



#TNMEB1PH

81.5mm W x 206.50 H x 77mm D

#TNMEB2PH

146.5mm W x 246.50 H x 87mm D

#TNMEB3PH

146.5mm W x 246.50 H x 87mm D

FEATURES

- Made of UV stable plastic that won't shatter
- Shear bolt connectors for perfect connection every time
- Safer – No bare live parts
- Main cable supported by gland in gland plate
- Gland plate perfect fit for conduit gland too
- Strip length clearly outlined on connector body
- Make off connectors outside enclosure, saves time & effort
- Electrical test points and test point caps built into connector bolt for ease of testing
- Captive Stainless Steel cover screw
- Insulated bimetallic connectors will terminate AL/CU cables, 4mm²-35mm² range



STRAIN CLAMPS

USE WITH

STRAIN CLAMPS



Cat No.

#0-708046-3

MATERIAL

Body: Glass Filled Nylon
Straps: Stainless Steel
Cable Type: Neutral screen
Conductor Range: 9-17mm O.D.

These clamps are used to take the strain of house service connections typically from overhead conductors to the fascia board. Their wedge style design means the clamp stays tight due to the strain it's holding. Fast and simple to install.



Cat No.

#0-708018-1

MATERIAL

Body: Glass Filled Nylon
Straps: Stainless Steel
Cable Type: Neutral screen
Conductor Range: 8-25mm O.D.

All Specials and Products featured in TRANSNET JUICE are available from all good electrical wholesalers.





GURO-CEC - PUSH ON SILICONE CABLE END CAPS

Save time and money with these reusable cold applied cable end caps

FEATURES

- Made from Silicone Rubber
- Used to protect cable ends from humidity during storage
- High elasticity & toughness against crack propagation
- Weatherproof
- UV resistant
- Range taking

**NO HEAT
REQUIRED,
SIMPLY
PUSH ON!**



Raychem
from TE Connectivity



Cat No.	Application Range (mm)	Cable Cross Section (mm ²)
GURO-CEC-20/26	20-26	4X10-5X16
GURO-CEC-24/34	24-34	5X16-4X35
GURO-CEC-30/38	30-38	4X35-4X70
GURO-CEC-38/48	38-48	4X70-4X120
GURO-CEC-44/55	44-55	4X120-4X185

PRICED FROM
\$12.74
+ GST

RDSS - RAYFLATE DUCT SEALING SYSTEM

APPLICATIONS

- For power cables
- For two or more cables, sealing clips are required
- Inflation tool is TDUX-IT-16 for purchase or hire
- Canisters of compressed air or CO₂ are compatible
- Each Rayflate seal covers a large range of cable and duct diameters
- Rayflate seals can be installed when water is still flowing out of the duct – thus saving valuable installation time
- Use not only for new cable installations but also for existing applications
- Rayflate seals can be quickly and easily removed from a duct or pipe by deflation



Raychem
from TE Connectivity



All Specials and Products featured in TRANSNET JUICE are available from all good electrical wholesalers.



MI3100S

EUROTESTEASI - MULTIFUNCTION INSTALLATION TESTER

The MI3100S EurotestEASI is a fast, accurate and easy-to-use multifunctional measuring instrument that performs a basic set of installation safety tests according to AS/NZS 3000. It enables online voltage monitoring, phase sequence testing and earth resistance measurement. The MI3100S incorporates full schematic help screens for each test and features a large, bright LCD screen with backlight. The instrument also contains a list of characteristics of fuses and RCDs for PASS/FAIL evaluation of test results. The MI3100S performs continuity, insulation, RCD, loop, line, voltage, frequency and phase sequence tests.



KEY FEATURES

- Built-in help screens for referencing on site
- Built-in fuse tables for automatic evaluation of the line / loop impedance result
- Monitoring of all three voltages in real-time
- Automatic polarity reversal on continuity test
- Built-in charger & rechargeable batteries as standard accessory
- Loop impedance test without tripping the 30mA RCD
- Automated RCD testing procedure



PROMO KIT

INSTALLATION TESTER PROMO KIT #MI3100SPROMO

KIT INCLUDES

\$1795.00

PLUS GST

MI3100S METREL EUROTEST EASI-S INSTALLATION TESTER

MD9230 METREL CAT III CLAMP TESTER AC/DC

MARTL78 MARTINDALE 50M GREEN R2 CONTINUITY WIRE ON REEL

BENTROD BENT EARTH PEG

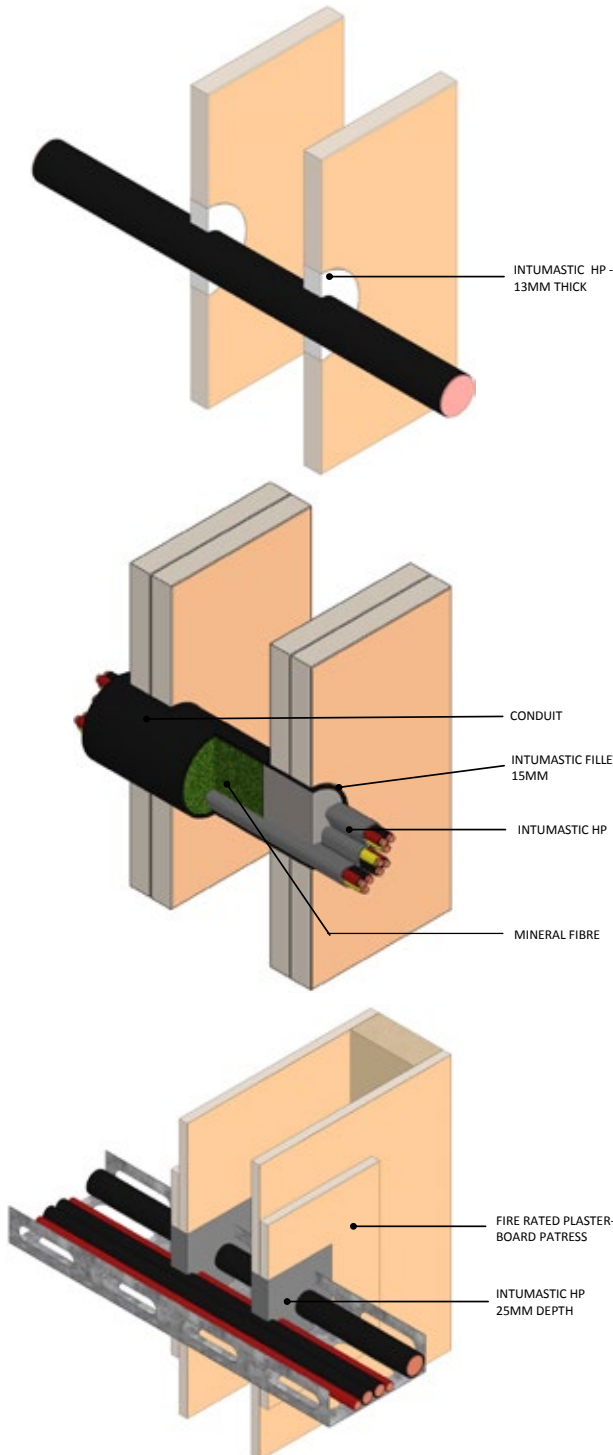


NEW PRODUCT! INTUMASTIC HP



Firetherm Intumastic HP is a low smoke intumescent pressure exerting mastic used to seal fire rated openings where passage of flame is a risk. Manufactured under controlled factory conditions and to precise specifications.

Intumastic HP may be used to seal openings in fire compartment walls and floors around services such as suitably supported ducts, pipe work and electrical cabling against the passage of fire and can provide up to two hours integrity in block-work and plaster board wall constructions.



- Size: 310ml tube
- Colour: Grey
- Tack free time: 15-60 minutes depending upon temperature/humidity
- Standard minimum depth: 30mm
- VOC: 4gm/litre
- Viscosity: 5,000-7,000 poise at 20°C
- Specific Gravity: 1.31 at 20°C



WHY CHOOSE SPARTAN LED?

Shedding Light on Industrial LEDs



TransNet New Zealand Ltd

Auckland

20 Neilpark Drive
East Tamaki
Auckland
NEW ZEALAND
Ph 0800 442 182
Fax 0800 442 183
PO Box 39 383
Howick, Auckland

Wellington

18 Sydney Street
Petone
Wellington
NEW ZEALAND
Ph 04 576 2530
Fax 04 576 0040
PO Box 39 383
Howick, Auckland

NEW ZEALAND

sales@transnet.co.nz

TransNet Tonga

Ma'ufanga

Small Industries
Ma'ufanga
TONGA
Ph +67 627 939
Fax +67 627 976
PO Box 2932
Nukualofa

TONGA

transnet@kalianet.to

All industries face pressure to reduce costs and ensure a site is running as efficiently as possible. Lighting often contributes significantly towards both electrical costs and overall running costs. If you are still using traditional lighting, such as sodium floodlights or fluorescent linear lighting, an excellent opportunity exists to make significant cost savings by upgrading to LED.

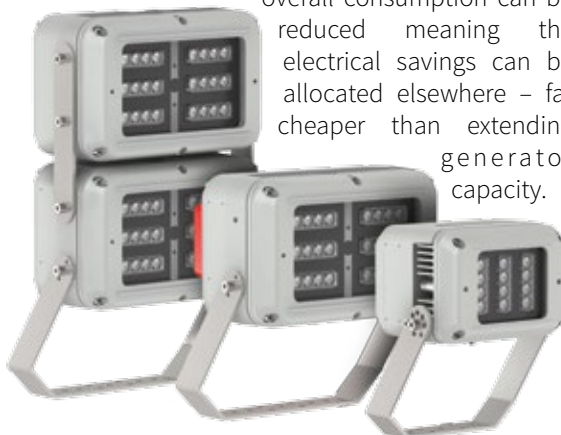


Energy Savings & Reducing Consumption

LEDs are an extremely efficient light source and use much less power to produce the same light output as a traditional fitting. LEDs also have the added advantage of generating less heat, a by-product of inefficient lighting. A traditional 400W Floodlight (which will actually use around 440W of power in total) can be replaced by a SPARTAN LED Floodlight which uses 136W of power, saving around 304W for every luminaire switched to LED. Extend this saving over a larger installation and the savings on running costs are significant.

Reducing consumption of a lighting solution can also provide cost savings in other ways. For larger installations which rely on generators to provide power, limited capacity can often be a problem. By switching to LED and reducing the wattage per unit,

overall consumption can be reduced meaning the electrical savings can be allocated elsewhere – far cheaper than extending generator capacity.



Minimising Light Wastage

Unlike traditional technology which throws light out in all directions, LEDs can deliver highly directional light to illuminate only the areas where light is required. Whilst traditional fittings use reflectors to direct light, the results are often imprecise. SPARTAN's LED luminaires use Raytec's Vario technology to offer a choice of 8 different beam patterns, circular and elliptical, ensuring light is targeted and not wasted. Reducing light waste will ultimately help to save costs by ensuring money and energy is not spent illuminating areas of the site where light isn't needed.



Reduced Maintenance

With Ex applications often located in areas of restricted access, a low maintenance lighting solution should be essential. Reducing the number of maintenance interventions by converting to LED luminaires can help make significant savings.

SPARTAN LED luminaires offer a lifetime of 100,000+ hours, without the need for re-lamping or maintenance. SPARTAN can also offer greater flexibility; for example LED and PSU modules can be split so the PSUs can be removed and located remotely at ground level for easier inspection.

In an Ex environment lighting is often exposed to constant shock and vibration in extreme temperatures. SPARTAN luminaires offer reliability when it counts, built with marine grade aluminium and designed without ledges to prevent dust or water from accumulating, a vibration resistant design, and a wide operating temperature of -50°C up to +60°C means SPARTAN luminaires are able to withstand even the most challenging of conditions.

rayTEC

TransNet NZ Ltd has made every reasonable effort to ensure the accuracy of this information and it is to the best of our knowledge correct and reliable. Under no circumstances does this constitute an assurance of any particular quality or performance and users should independently evaluate the suitability of products for their desired application. All information in this publication including pricing, drawings, illustrations, images and graphic designs are reflections of our current understanding. TransNet NZ Ltd reserves the right to make any adjustment to this information at any time. Our liability for the products outlined in this publication is set forth in our standard terms and conditions of trade. In case of any potential ambiguities or questions, please contact us for clarification.



NEW ZEALAND OWNED